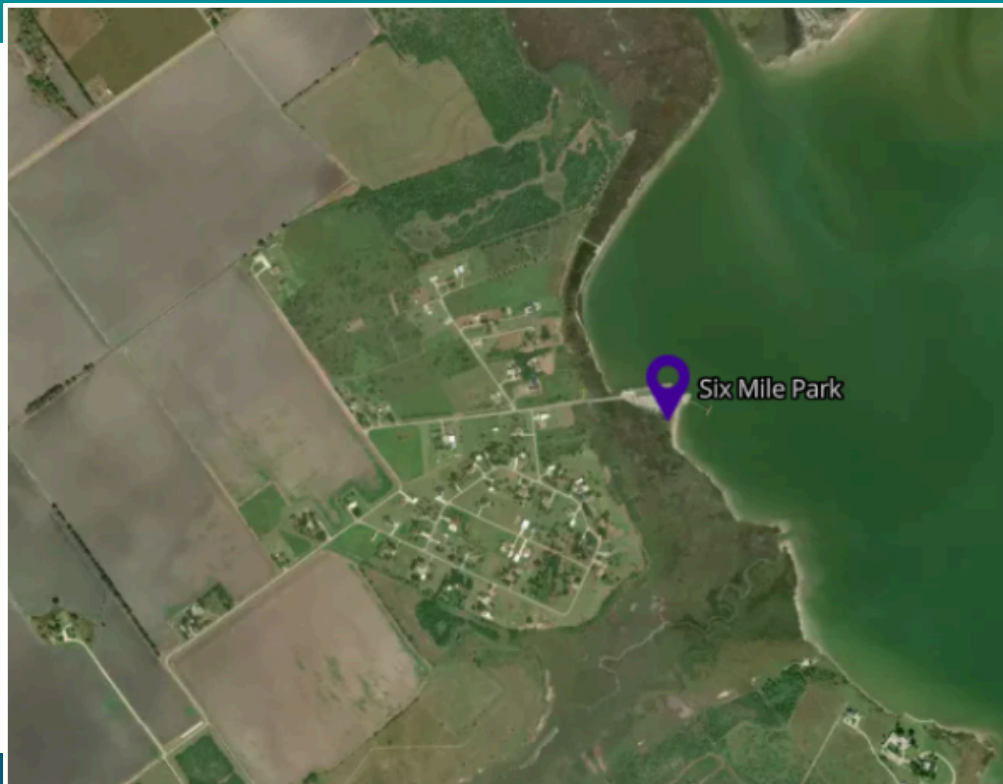


Site Description

Six Mile Park

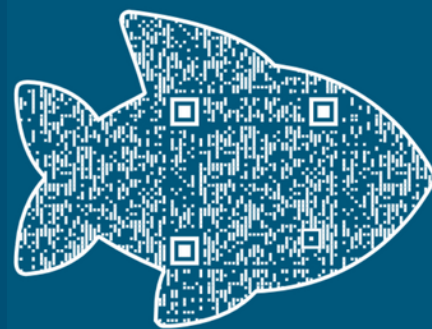


Location of the Hohonu water level sensor monitoring water levels and potential coastal inundation near Six Mile Park, Texas.

Our sensor in Six Mile Park is positioned on a boat ramp that provides direct access to the water. The park is a popular spot for nearby residents, offering easy opportunities for boating and fishing throughout the week.

Surrounded by a residential community, it serves as both a recreational destination and a gathering place for those who enjoy spending time outdoors.

Water Sensor Live Data



Why This Site

- The area experiences frequent compound flooding.
- Flooding along the roadway creates safety risks for drivers.
- The community depends on reliable access in and out of the park.
- A sensor provides timely awareness of when the road may become impassable.

ACTIVELY LOOKING FOR STAKEHOLDERS

Contact Dr. Tissot
philippe.tissot@tamucc.edu for
more information

Recent Measurements at Port Lavaca Six Mile Park



Figure 1. Graphs water levels measured in feet at the Six Mile Park from March 26th to March 30th 2025. This graph shows a sharp spike in the water levels due to heavy rain storm. This event caused heavy flooding that lead to a road at 6 Mile Park becoming submerged Please note the exact water level is not accurate due to not having the exact height of the sensor at this time

Water Level Comparison Over Time

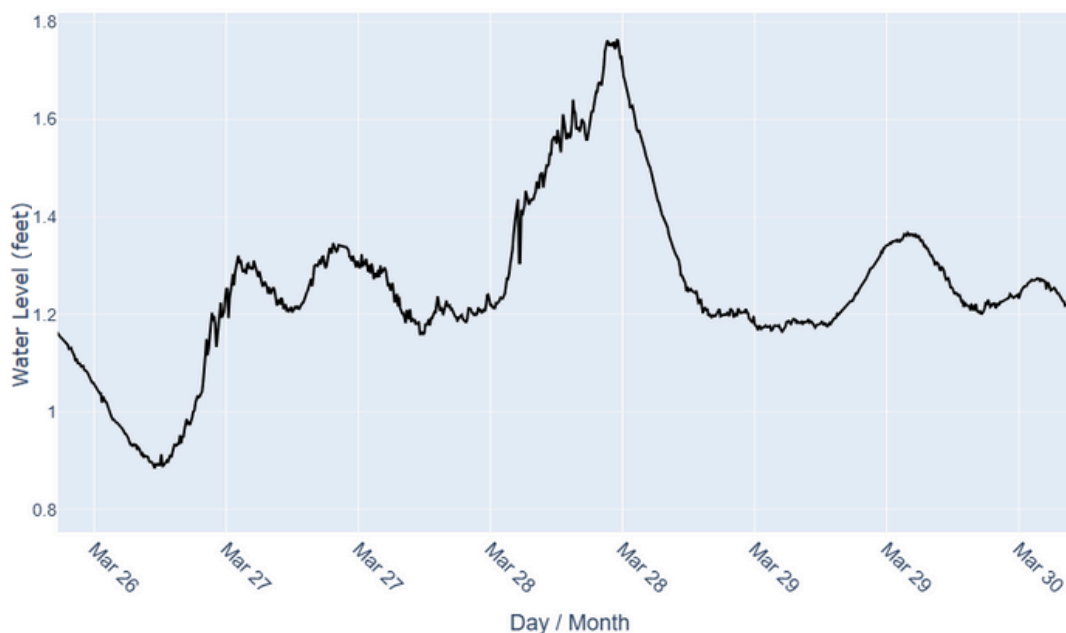


Figure 2. Graphs water levels measured in feet at Six Mile Park from April 1st to April 7th. This graph shows 3 spikes in water levels at Six Mile Park due to unusually high winds These wind events caused the road at Six Mile Park to flood over at three different times over the course of the week. Please note the exact water level is not accurate due to not having the exact height of the sensor at this time.

Water Level Comparison Over Time

