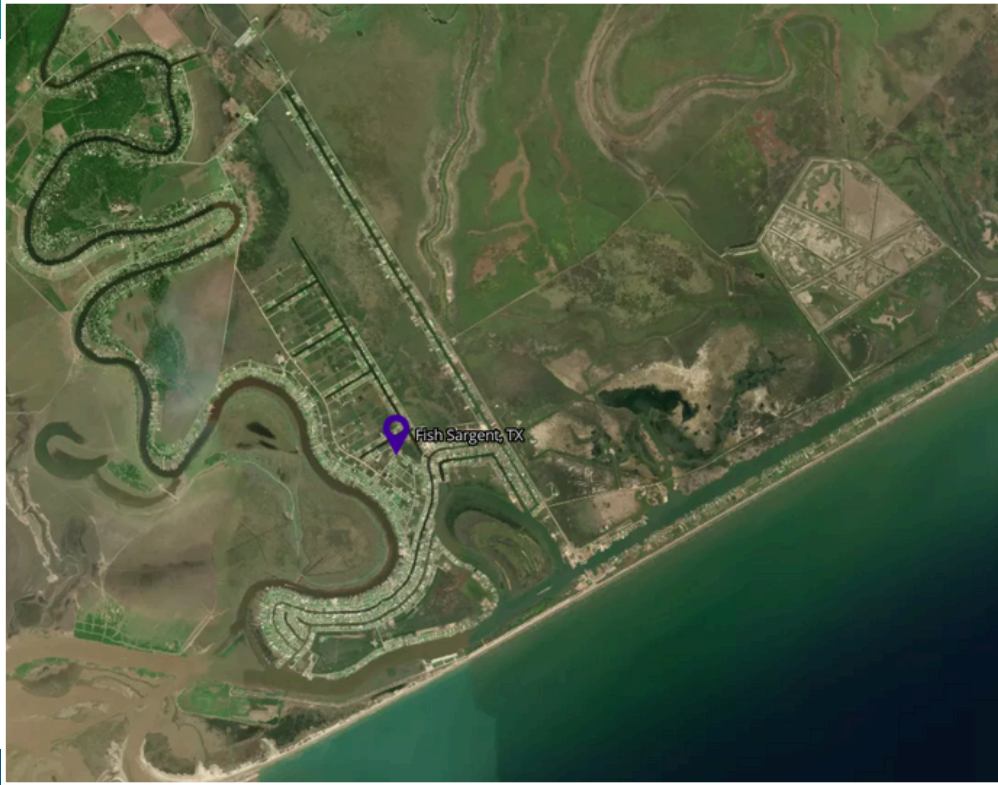


# Sargent



Location of the Hohonu water level sensor monitoring water levels and potential coastal inundation near Fish Sargent, Texas.

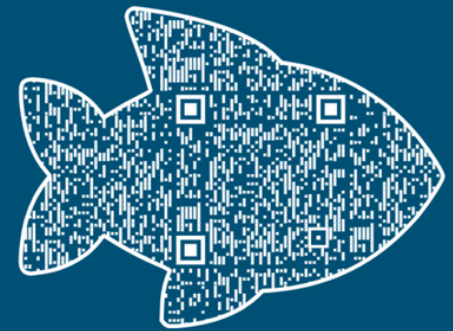
## Why This Site

- Many people visit Sargent on a seasonal basis.
- The canal system creates unusual flooding patterns, which can delay the rise in water levels.
- Following the recent impact of Beryl, there is increased attention on how flooding affects the community.
- There is a high possibility of compound flooding.

## Site Description

Our sensor in Sargent, Texas is located along a manmade canal. The community of Sargent has several local businesses and sees a seasonal flow of visitors who come for the area's excellent fishing. People are also drawn to Sargent for beach driving, recreational boating, and the region's stunning wildlife and birdwatching opportunities.

### Water Sensor Live Data



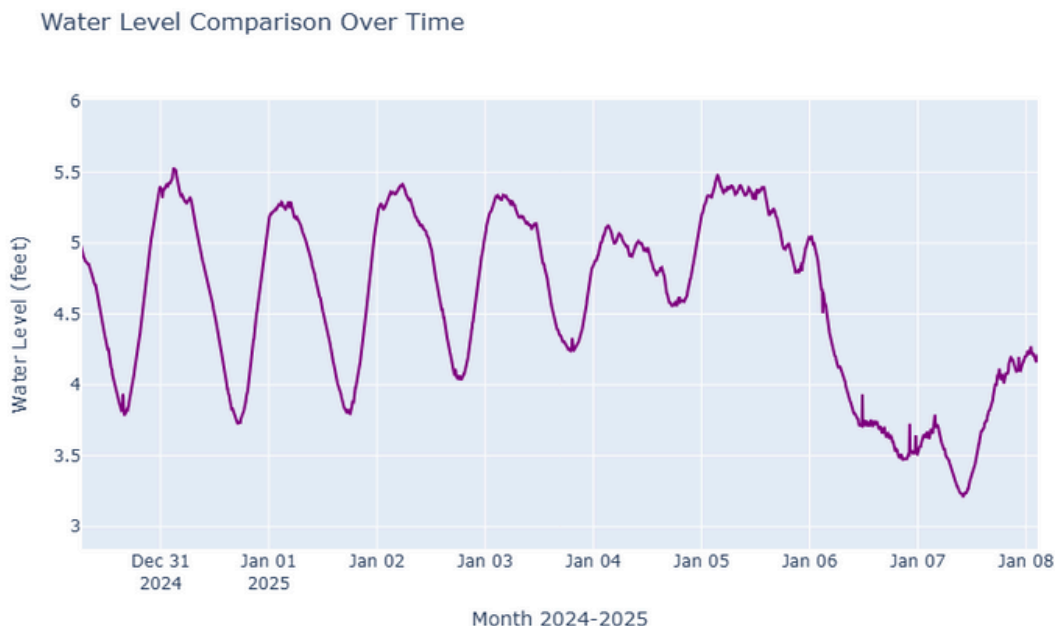
## ACTIVELY LOOKING FOR STAKEHOLDERS

Contact Dr. Tissot  
[philippe.tissot@tamucc.edu](mailto:philippe.tissot@tamucc.edu) for  
more information

## Recent Measurements at Sargent Fish Sargent



**Figure 1.** Graphs water levels measured in feet at the Sargent water level from December 29<sup>th</sup> 2024 to January 8<sup>th</sup> 2025. This graph shows a sharp fall in water level on January 6<sup>th</sup> to the 7<sup>th</sup> that is outside the normal for the tidal range viewed on December 29<sup>th</sup> to January 6<sup>th</sup>. Please note the exact water level is not accurate due to not having the exact height of the sensor at this time



**Figure 2.** Graphs water levels measured in feet from April 25<sup>th</sup> to May 17<sup>th</sup> 2025. This graph shows the overall water level increasing while still showing heavy tidal influence. The graph is therefore showing a spike in water levels due to an unknown influence. Please note the exact water level is not accurate due to not having the exact height of the sensor at this time

