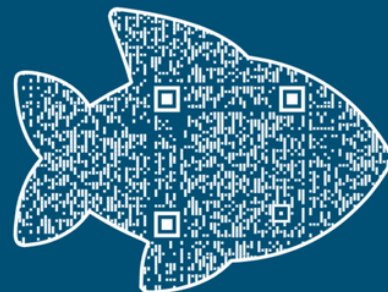


This sensor sits on a ranch near the town of Bayside in Copano County. The property borders Copano Bay, a quiet stretch of water known for its calm conditions. The bay is popular for a variety of recreational activities. For starters, boating, fishing, and bird watching attract people throughout the year. It is also an important area for coastal wildlife and migrating birds. The bay's natural setting adds to the historic charm of the Bayside community.

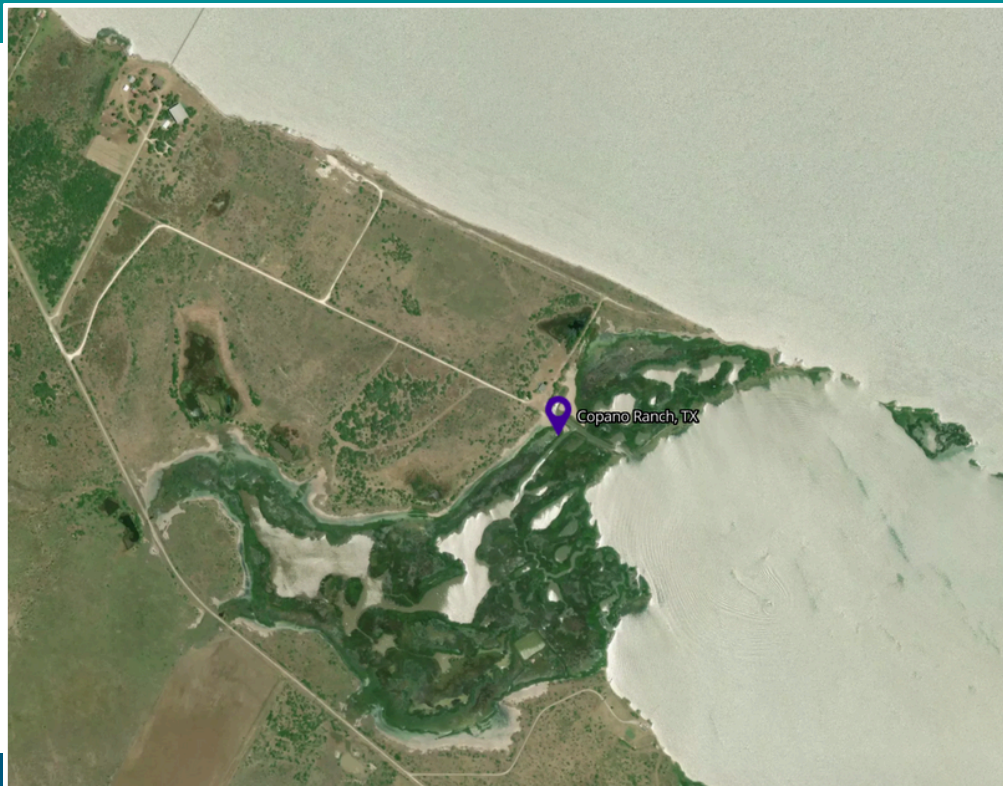
### Water Sensor Live Data



## ACTIVELY LOOKING FOR STAKEHOLDERS

Contact Dr. Tissot  
[philippe.tissot@tamucc.edu](mailto:philippe.tissot@tamucc.edu) for  
more information

# Bayside Copano Ranch



Location of the Hohonu water level sensor monitoring water levels and potential coastal inundation near the Bayside, Texas.

## Why This Site

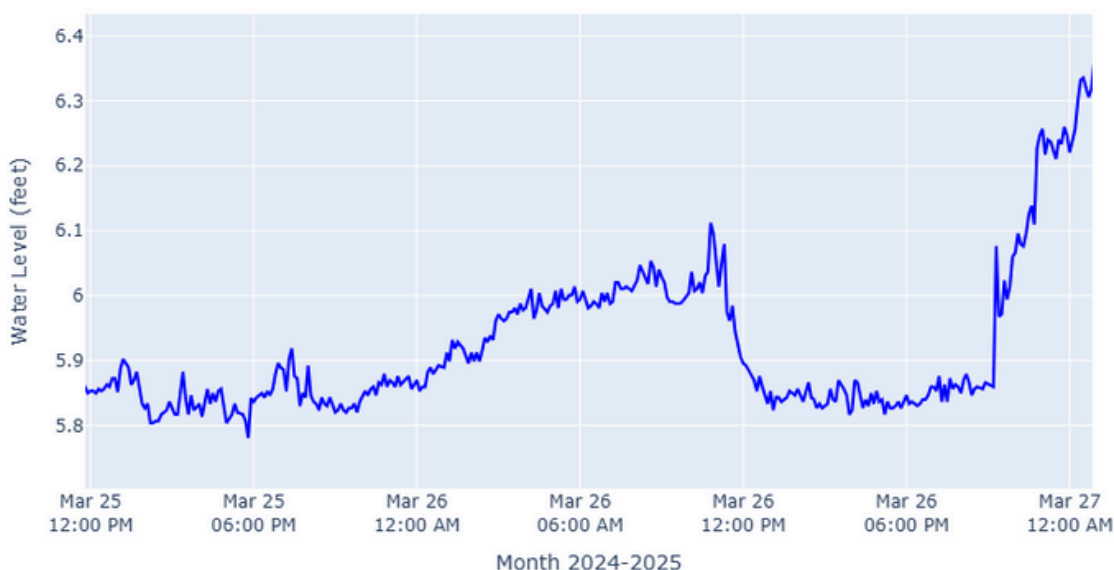
- Many people need to drive through Bayside to reach larger cities, but the flooded roads create hazardous conditions and pose a serious public safety risk.
- Because Bayside is located in a bay, several factors contribute to the frequent flooding.

## Recent Measurements at Bayside Copano Ranch



**Figure 1.** Graphs water levels measured in feet at the Copano Ranch from March 25<sup>th</sup> to March 27<sup>th</sup> 2025. This graph shows the overall water level increasing while still showing small tidal influence. The graph is therefore showing a spike in water levels due to an unknown influence. Please note the exact water level is not accurate due to not having the exact height of the sensor at this time.

Water Level Comparison Over Time



**Figure 2.** Graphs water levels measured in feet at the Copano Ranch from November 29<sup>th</sup> to December 17<sup>th</sup> 2024. This graph shows a sharp fall in water level on December 10<sup>th</sup> to December 14<sup>th</sup> that is outside the normal for the tidal range viewed on November 29<sup>th</sup> to December 10<sup>th</sup>. Please note the exact water level is not accurate due to not having the exact height of the sensor at this time.

Water Level Comparison Over Time

