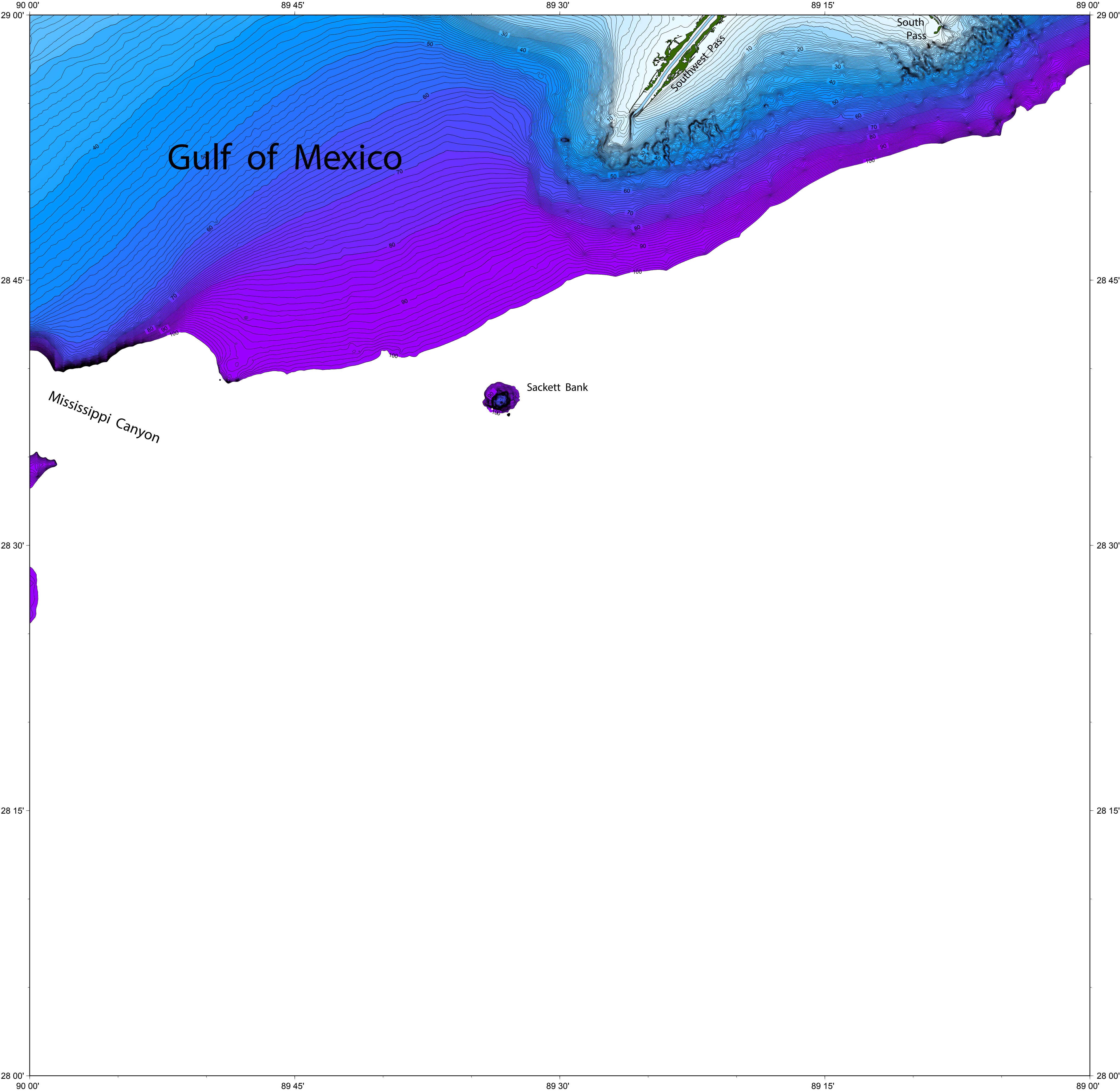




# BATHYMETRY AND LAND TOPOGRAPHY OF THE SOUTHWEST PASS AREA



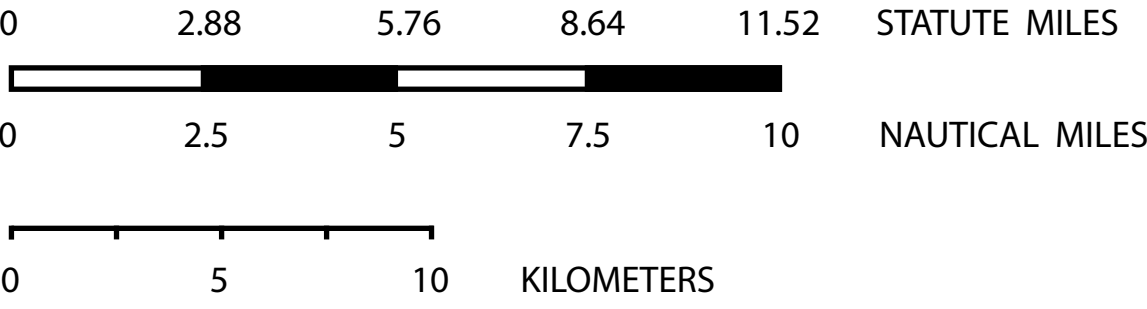
NW Gulf of Mexico Bathymetry Program  
Department of Oceanography  
Department of Geography  
Texas A&M University  
T. L. Holcombe, W. R. Bryant, and S. W. Bednarz

Imagery by L. H. Holcombe using GMT (Generic Mapping Tools)

Texas Sea Grant College Program  
R. R. Stickney, Director

Contour interval one meter  
EQUIDISTANT CYLINDRICAL PROJECTION

Note: The bathymetry is intended  
to show seafloor topography only,  
and is NOT TO BE USED FOR NAVIGATION



**Bathymetry**  
Historic bathymetric (hydrographic) surveys conducted since 1933 by the NOAA National Ocean Service/Coast Survey, available from the National Geophysical Data Center. Surveys vary as to sounding density, accuracy of navigation, accuracy of depth, zero datum, date of survey, and type of instrumentation. Adjustments were made to reconcile diverse data sets. (<http://www.ngdc.noaa.gov/mgg/bathymetry/hydro.html>)  
**Land Topography**  
U.S. Geological Survey National Elevation Dataset, 1x1 arc-second resolution. (<http://ned.usgs.gov/>)  
**Shoreline**  
The NOAA National Ocean Service Medium-Resolution Shoreline, available from the National Geophysical Data Center. Nominal scale 1:70,000. (<http://www.ngdc.noaa.gov/mgg/shorelines/shorelines.html>)