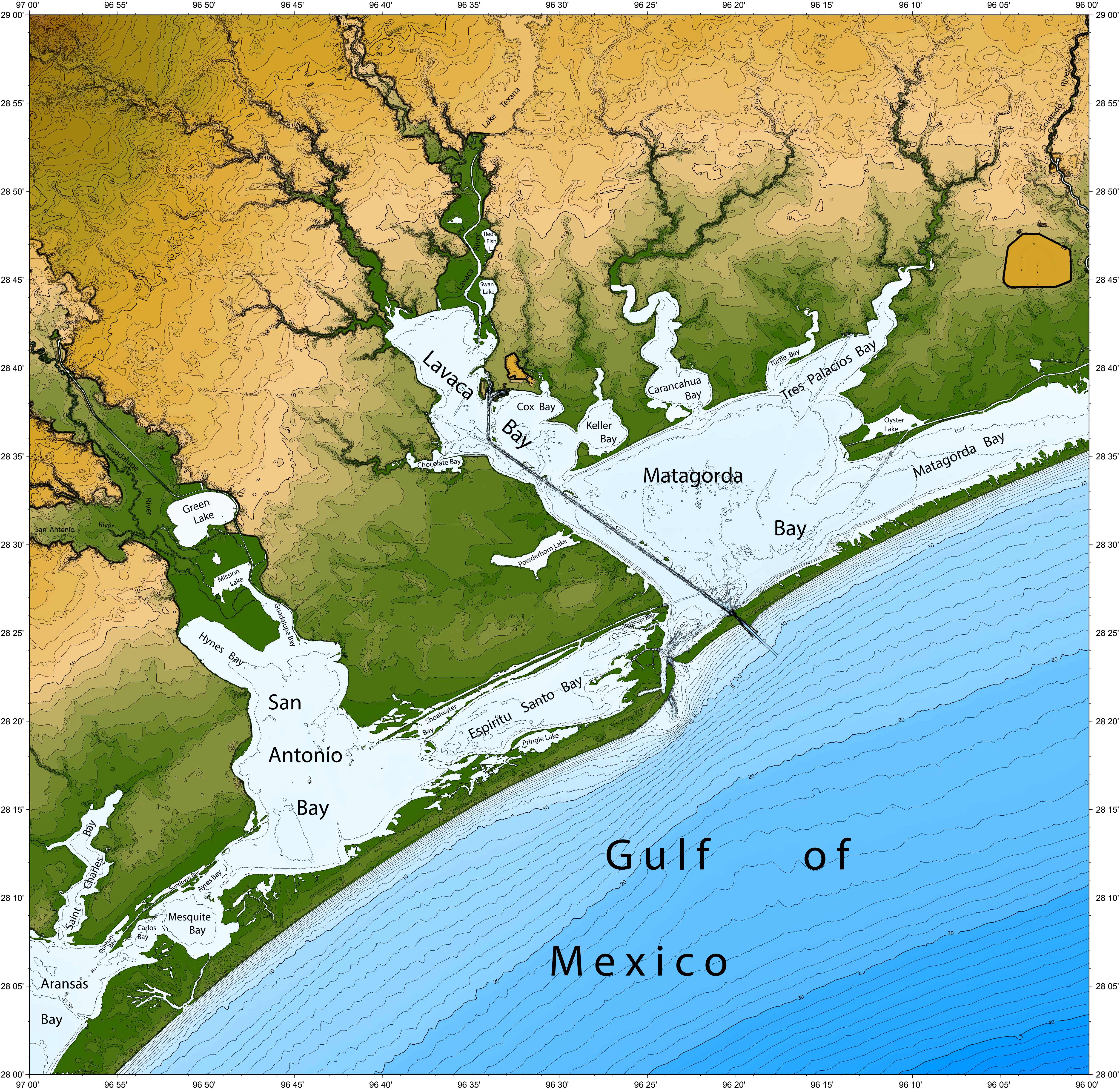




BATHYMETRY AND LAND TOPOGRAPHY OF THE PORT LAVACA AREA



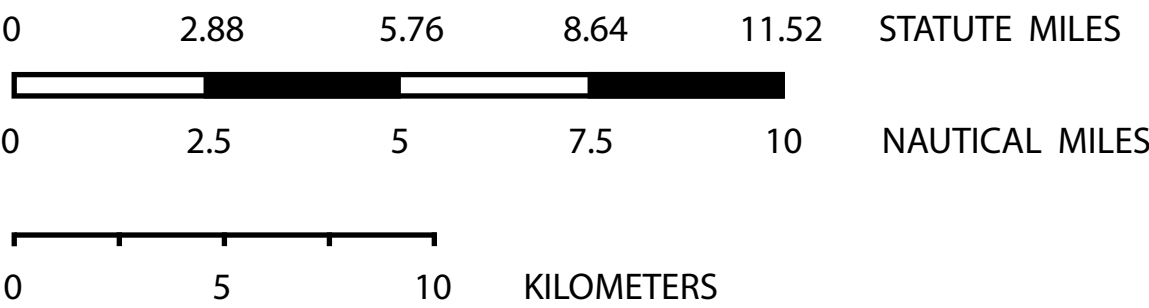
NW Gulf of Mexico Bathymetry Program
Department of Oceanography
Department of Geography
Texas A&M University
T. L. Holcombe, W. R. Bryant, and S. W. Bednarz

Imagery by L. H. Holcombe using GMT (Generic Mapping Tools)

Texas Sea Grant College Program
R. R. Stickney, Director

Contour interval one meter
EQUIDISTANT CYLINDRICAL PROJECTION

Note: The bathymetry is intended
to show seafloor topography only,
and is NOT TO BE USED FOR NAVIGATION



Bathymetry
Historic bathymetric (hydrographic) surveys conducted since 1933 by the
NOAA National Ocean Service/ Coast Survey, available from the National
Geophysical Data Center. Surveys vary as to sounding density, accuracy of
navigation, accuracy of depth, zero datum, date of survey, and type of
instrumentation. Adjustments were made to reconcile diverse data sets.
(<http://www.ngdc.noaa.gov/mgg/bathymetry/hydro.html>)
Land Topography
U. S. Geological Survey National Elevation Dataset, 1x1 arc-second resolution.
(<http://ned.usgs.gov/>)
Shoreline
The NOAA National Ocean Service Medium-Resolution Shoreline, available
from the National Geophysical Data Center. Nominal scale 1:70,000.
(<http://www.ngdc.noaa.gov/mgg/shorelines/shorelines.html>)